

AK 110-1911

# Annual Report 1910-1911

26

**Hempstead Hall.** It is therefore with special gladness that we record the completion of the works at the Emi-



Street-waif entering Labour Home.

of steady industry, from the peril of joining the overcrowded ranks of casual labour, with the probable result of becoming unemployed and finally unemployable. The lads chosen are such as have been put

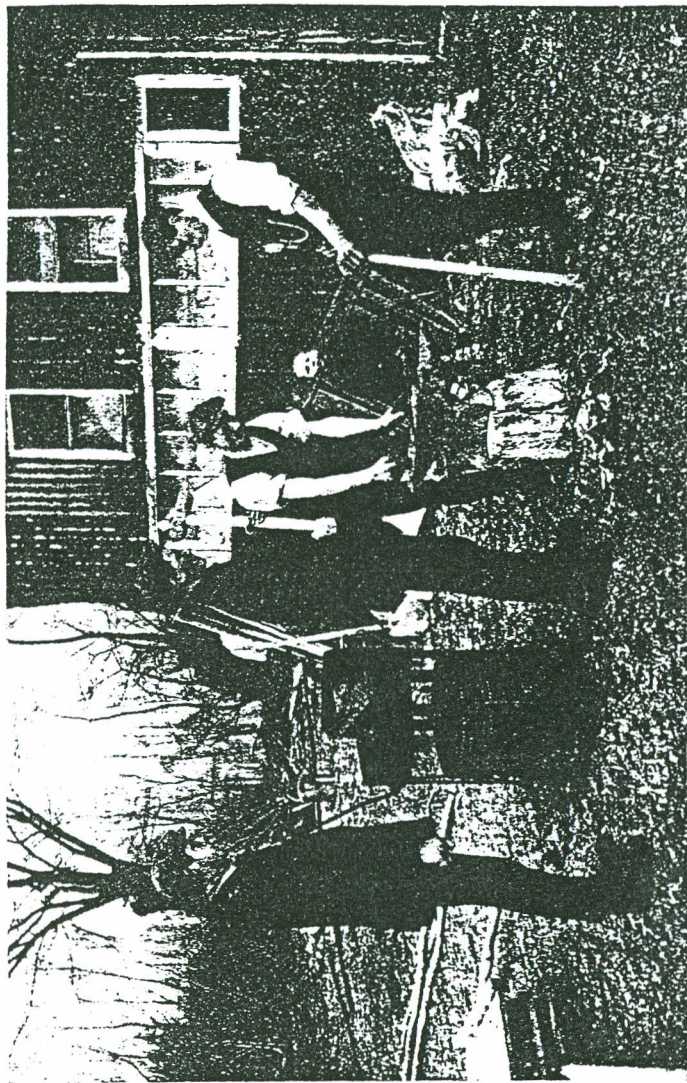
gration Training Farm, Hempstead Hall, referred to in our last Annual Report. They are found to add much to the facility of carrying on the special work for which the estate is now used—the training of lads for work on the land at home or in Australia.

We attach great importance to this special effort for rescuing lads, who are of good character and have not lost the habit

27

into blind-alley employments by their parents on leaving school, with the result that, at the age of seventeen or eighteen, they find themselves cast on the world, not knowing any trade, and without means of livelihood. Such lads are almost forced into the melancholy army of unemployed; and it is from this source more than from any other that there comes the supply of homeless, starving vagrants who haunt the streets at night, cadging for free soup; and passing on their own miseries to their children and remoter generations. Anything that can be done to avert this fate, to save the bright, hopeful lad of seventeen from becoming the hungry, ragged loafer of premature middle-age, is well worth the expenditure of much time and trouble.

# Training at Hempstead Hall



Lads Learning Smith's Work, Hempstead Hall, Essex.

26

or four months' special training for farm life preparatory to going to Australia, to the care of a local Committee with the Archbishop of Brisbane at its head, which



Group of Hempstead Lads.



Learning to Milk.

secures for them well-paid and permanent work on farms, and looks after their material and spiritual welfare. The training which they receive at Hempstead, though